

## Installing JBuilder 4 Foundation from the Student CD-ROM

1. Open the My Computer icon on the Window, as shown in Figure 1.
2. Right-click the CD-ROM icon (labeled JAWAWJB4) and choose Open to display the CD-ROM contents, as shown in Figure 2.

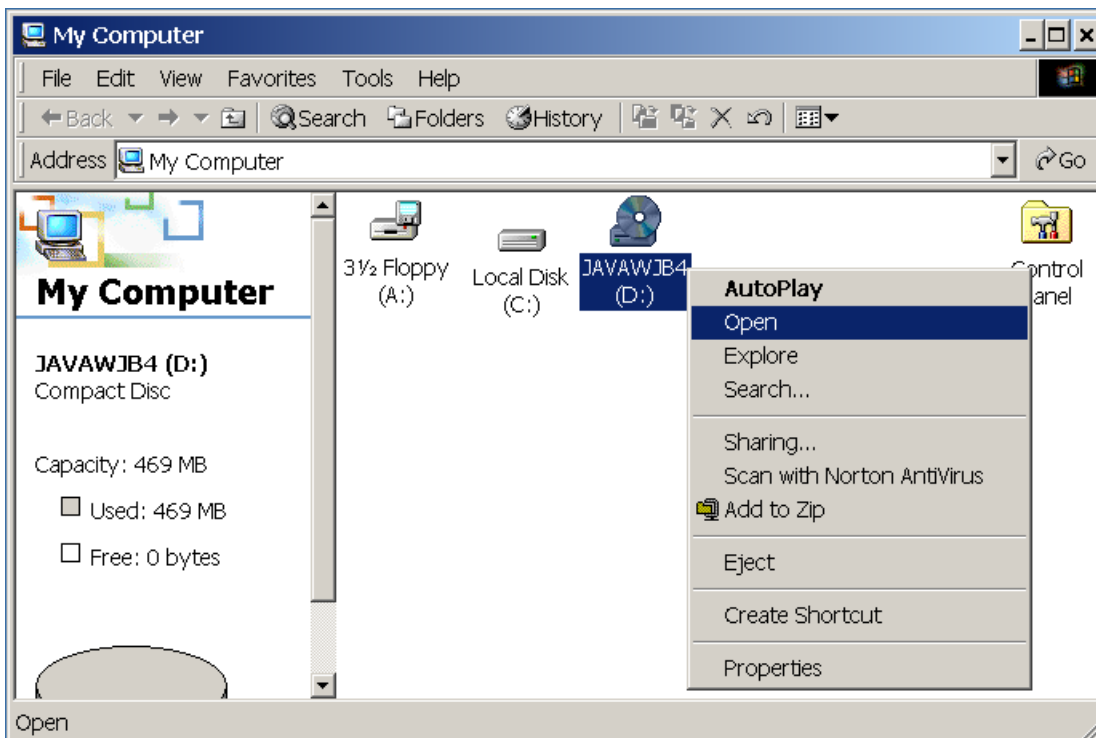


Figure 1

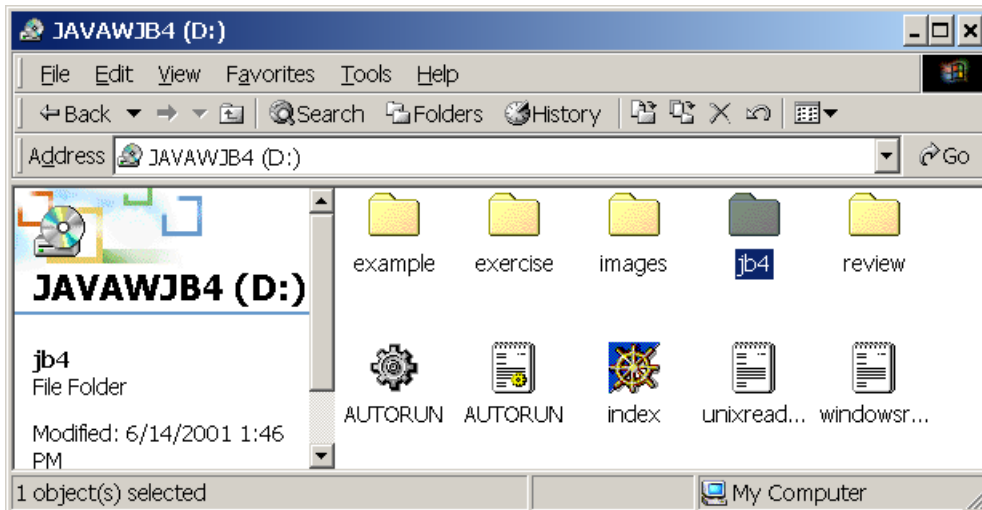


Figure 2

3. Double-click `jb4` to open the contents for JBuilder 4 software, as shown in Figure 3.

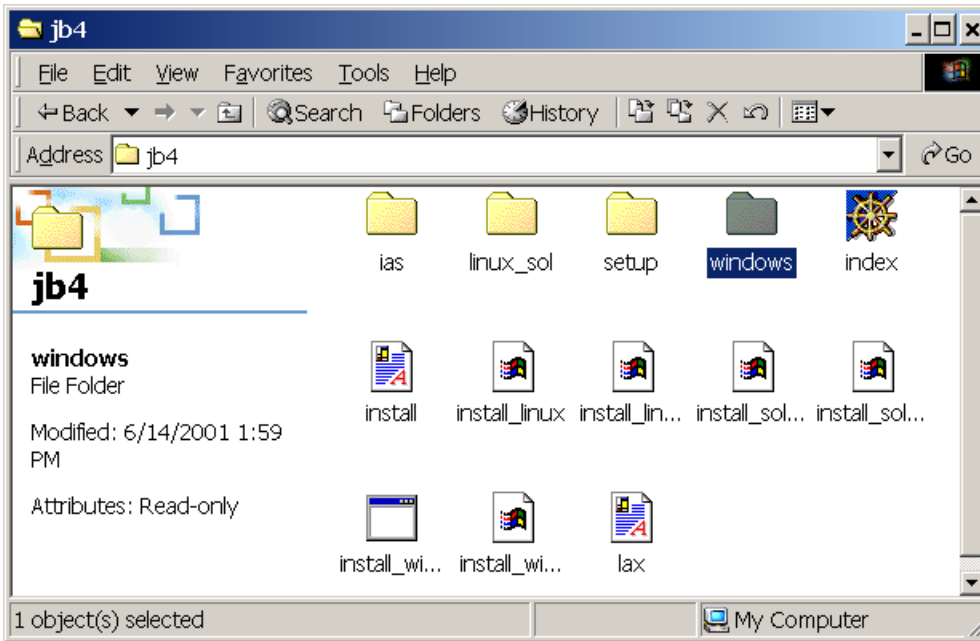


Figure 3

4. Double-click `Windows` to open the JBuilder for Windows, as shown in Figure 4.

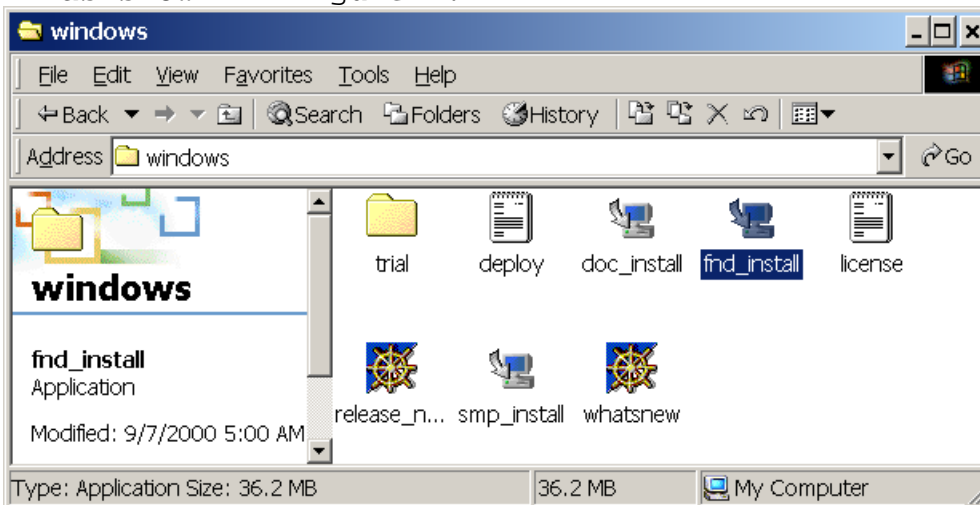
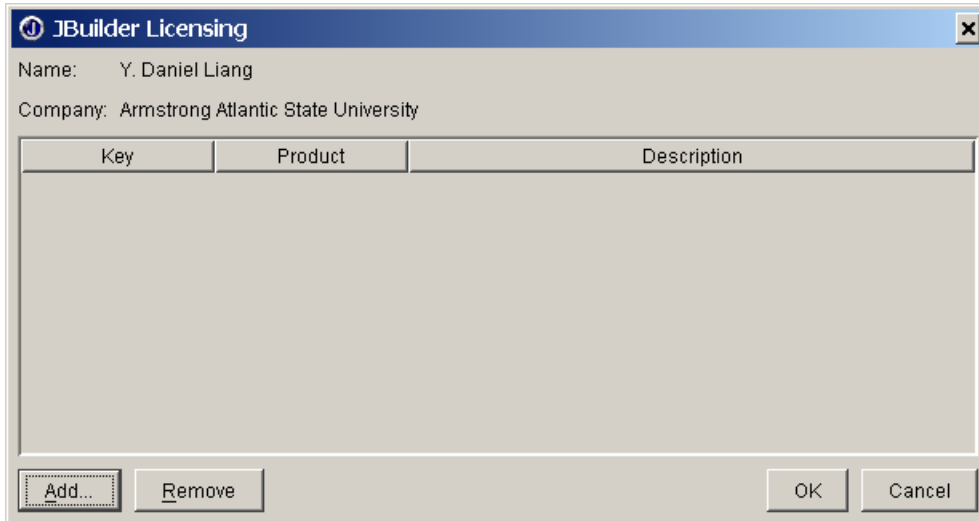


Figure 4

5. Double-click `fnd_install` to start to install JBuilder 4 Foundation. You can then install JBuilder 4 documentation by double-clicking the `doc_install` icon, and install sample projects by clicking the `smp_install` icon as shown in Figure 4. After the installation completed, obtain JBuilder 4 Foundation

- Key from  
<http://www.borland.com/jbuilder/foundation/download/>.
6. Start JBuilder 4 from Windows Start button. If this is the first time to use JBuilder, You will see the JBuilder Licensing window displayed as shown in Figure 5.



**Figure 5**

7. Click Add to display the Enter License window, as shown in Figure 6. Enter Serial Number and Key obtained from  
<http://www.borland.com/jbuilder/foundation/download/>. Click OK. Your JBuilder should start now.



**Figure 6**

NOTE: A student has alerted me that you need to have JRE (Java Runtime Environment) to start JBuilder installer. It is likely that your machine already has it installed. If not, download it from  
<http://java.sun.com/j2se/1.3/jre/download-windows.html>.