

CHAPTER**7****Creating, Mounting and Viewing Javadoc Documents**

You can view the javadoc documentation in Forte. To do so, you have to first generate the javadoc documentation using the javadoc wizard. This chapter demonstrates how to generate and view javadoc documentation in Forte.

7.1 Generating javadoc Documentation

Javadoc documents can be created by choosing *Tools, Generate Javadoc* from the context menu of a file system, a package, or a file in the Explorer. If the context menu is for a file, the documents are generated for the file only. If the context menu is for a package, the documents are generated for all the files in the package. If the context menu is for a file system, the documents are generated for all the packages and files in the file system.

The documents are stored in the directory specified in the Destination field of the Doclets property. To set the directory, choose *Code Documentation, Javadoc Executors, External Java* from the Options window, as shown in Figure 7.1. Right-click the ellipses in the Doclets field to display Property Editor for Doclets. Set a new directory in the Destination field, as shown in Figure 7.2.

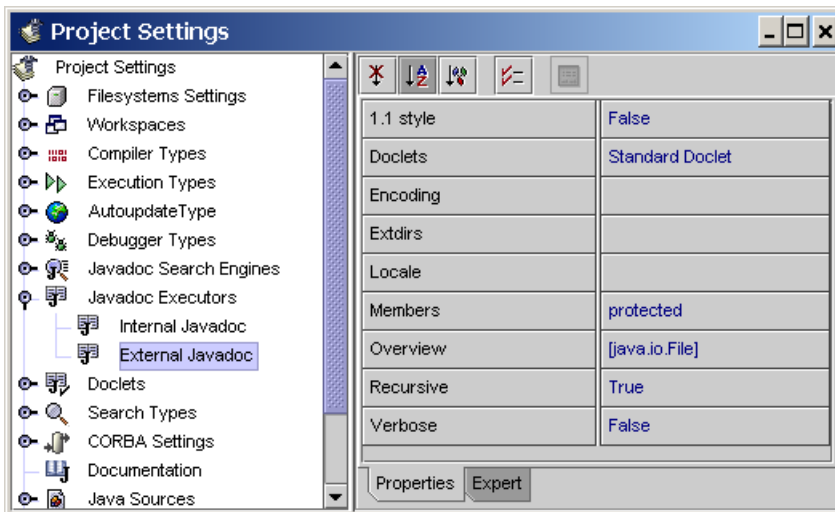


Figure 7.1

You can set properties for Javadoc Executors.

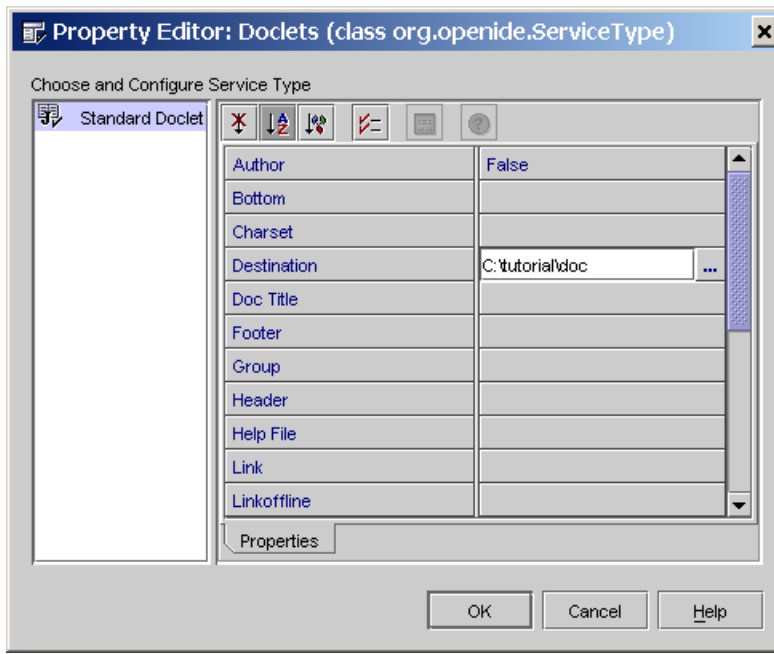


Figure 7.2

The *Doclets* property lets you specify the properties for Javadoc documents.

Here are the steps to generate the Javadoc documents for all source code in `c:\tutorial`.

1. Make sure the Destination property is set to **`c:\tutorial\doc`** for the Standard Doclet of External Javadoc, as shown in Figure 7.2. (You may have to first create the **`c:\tutorial\doc`** directory.)
2. In the context menu of the `Welcome.java` node in the Explorer, choose *Tools, Generate Javadoc*. The javadoc documentation for the `Welcome` class are now generated and placed in **`c:\tutorial\doc`**.

7.2 Mounting javadoc Documentation

To view or search the documents in Forte, the directory for the documents (**`c:\tutorial\doc`**) must be mounted in the Javadoc tab in the Explorer. To add a directory, right-click the Javadoc node to display a context menu, as shown in Figure 7.3. Choose *Add Local Directory* to display the Mount Directory window to specify a directory to mount, as shown in Figure 7.4. Type **`c:\tutorial\doc`** in the File Name field and click *Mount*. The directory is mounted in the Javadoc tab of the Explorer, as shown in Figure 7.5.



Figure 7.3

You can add a directory, or a JAR or a ZIP file to the Javadoc tab in the Explorer.

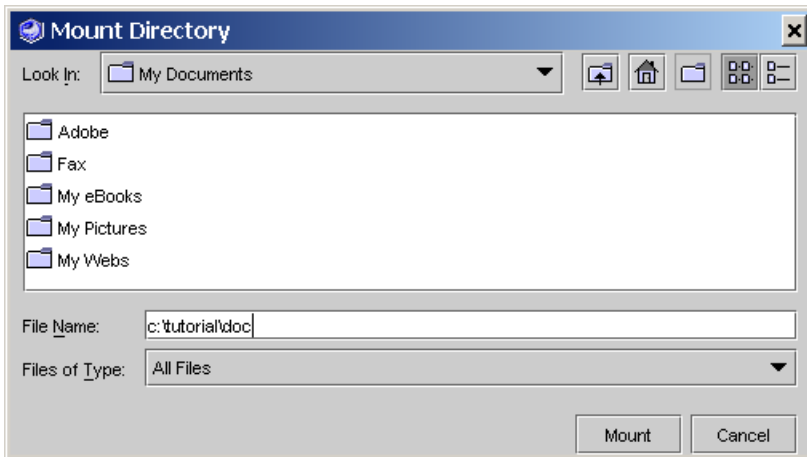


Figure 7.4

The Mount Directory window enables you to mount a Javadoc directory to Explorer.

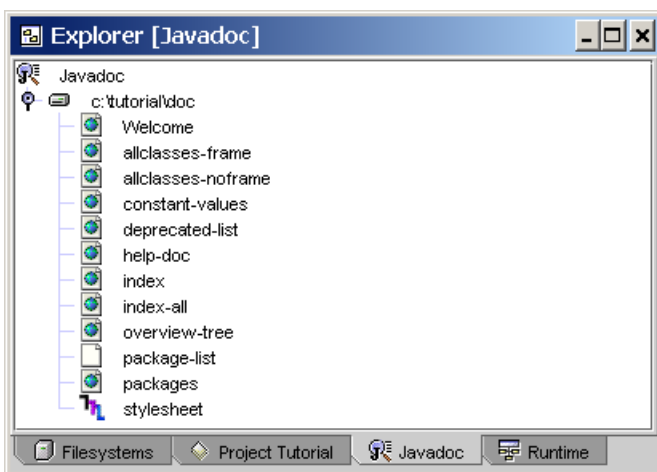


Figure 7.5

The Javadoc tab of the Explorer contains the javadoc documentation directories and jar files.

Forte NOTE: You can also add a JAR or a ZIP file to the Javadoc tab by choosing Add JAR command. A JAR or ZIP file is a compressed super file that consists of many small files. For information on creating a JAR file in Forte, see Chapter 8, ``???.``

To search Javadoc documents for the Java API, you need to mount the directory or the ZIP file for the documents in the Javadoc tab in the Explorer. The ZIP file **j2sdk1_4_0-doc.zip** (29.8 MB) can be downloaded from **<http://java.sun.com/j2se/1.4/docs.html>**. If you try to mount this ZIP file, a warning message (Figure 7.6) is displayed to alert you that the ZIP file does not contain any Javadoc index files. These files are actually in this file, but not in the right directory. The files in **j2sdk1_4_0-doc.zip** contain extra directories **docs** as shown in Figure 7.7.

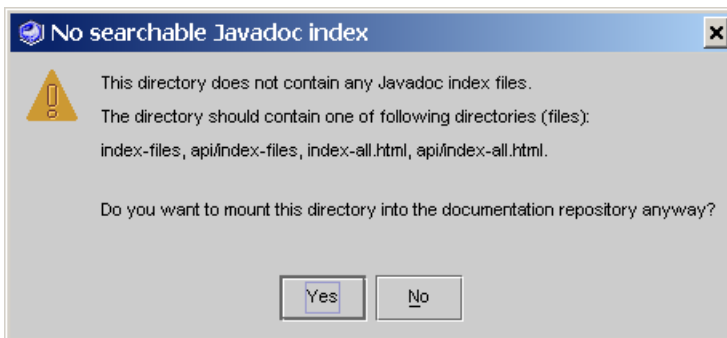


Figure 7.6

The directory or the ZIP file for the Javadoc documents should contain appropriate HTML index files.

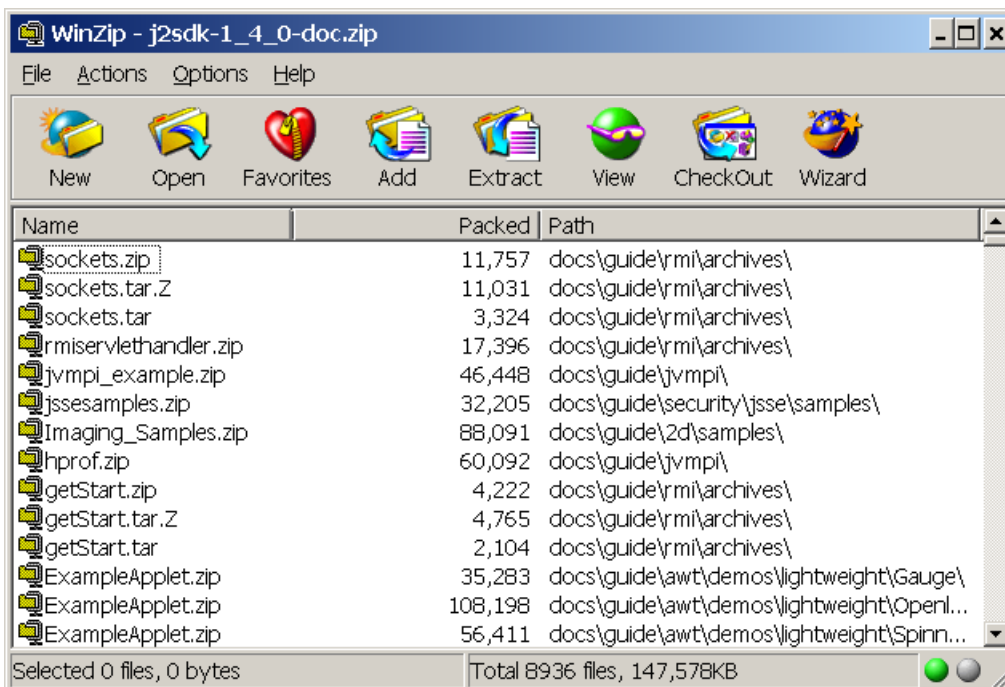
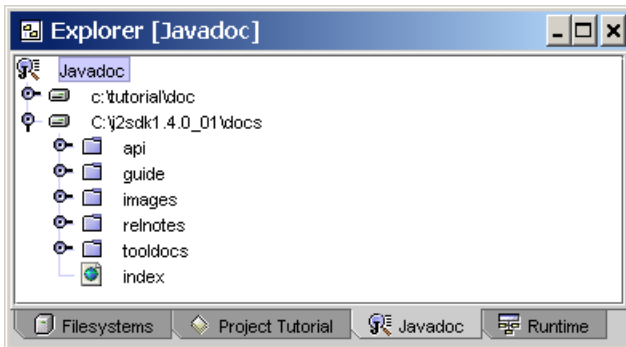


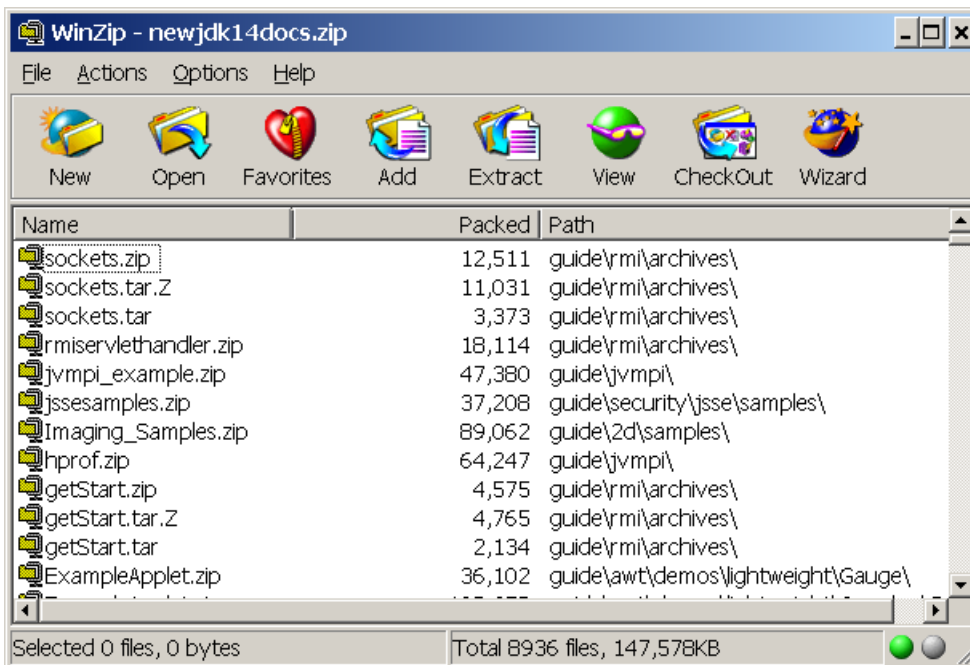
Figure 7.7

The files in the ZIP file *j2sdk1_4_0-doc.zip* contain an extra **docs** directory.

There are two ways to fix this problem. One way is to unzip the ZIP file into the directory `c:\j2sdk1.4.0_01`, and then mount `c:\j2sdk1.4.0_01\docs` in the Javadoc tab, as shown in Figure 7.8. The other way is to recompress the files in `c:\j2sdk1.4.0_01` into a new ZIP file named **newjdk14doc.zip**, which does not contain the extra **docs** directory, as shown in Figure 7.9. You can mount this new ZIP file using the Add JAR command from the context menu of the Javadoc node in the Javadoc tab of the Explorer, as shown in Figure 7.10.

**Figure 7.8**

The directory (`c:\j2sdk1.4.0_01\docs`) that contains the Javadoc documents for the Java API is mounted.

**Figure 7.9**

The new ZIP file for the Javadoc files has the appropriate HTML index files in the right directory.

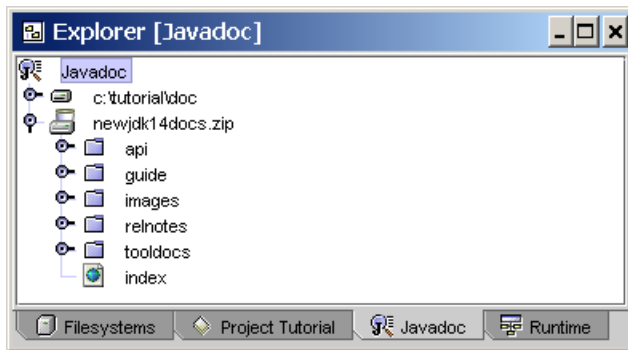


Figure 7.10

The new ZIP file for the Javadoc files is mounted into the Javadoc tab in the Explorer.

7.3 Searching and Viewing javadoc Documentation

You can search and view javadoc documentation that are mounted from the Javadoc tab in the Explorer. To search a document, choose *View, Javadoc Index Search* to display the Javadoc Index Search window, as shown in Figure 7.11. Type a search expression (e.g. `java.lang.String`) and click *Find* to display search results in the content pane. You can select an item from the search results by double clicking it, the javadoc documentation for the item is displayed in a Web browser, as shown in Figure 7.12.

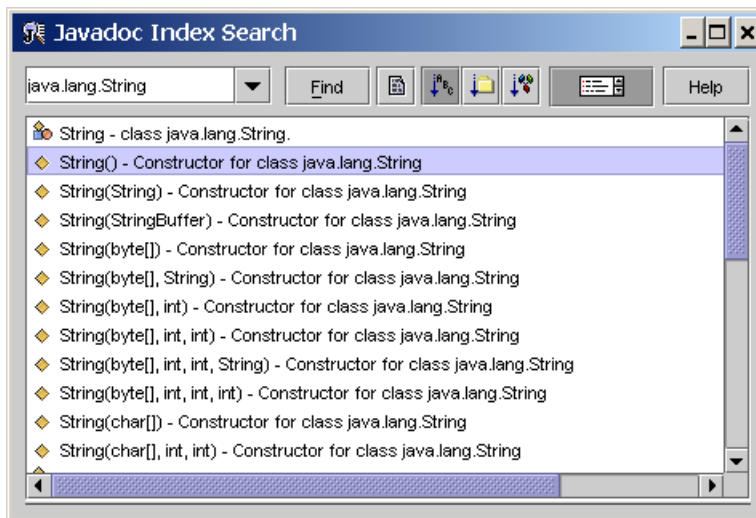


Figure 7.11

The Javadoc Index Search enables to search index for the javadoc documentation mounted in the Explorer.

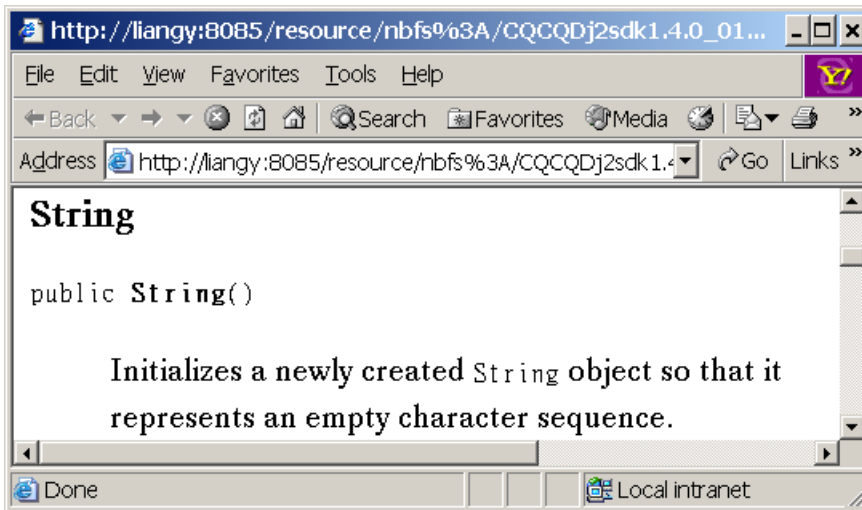


Figure 7.12

The javadoc documentation is displayed in the Web browser.

NOTE: You can specify which browser to use in the Options window by choosing *IDE Configuration, Server and External Tool Settings, Web Browser, and External Browser (Windows)*, as shown in Figure 7.13. You can then select an external Web browser in the DDE Server field.

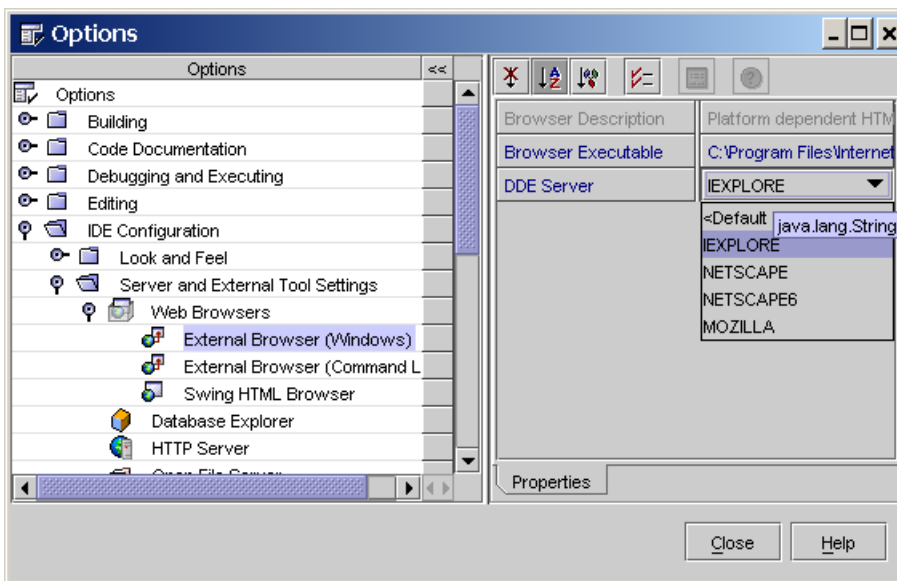


Figure 7.13

You can select an external Web browser in the Options window.

You can also view the documentation from the Source Editor. For example, to view for the documentation for the `println` method, choose *Show Javadoc* in the context menu of `println`

in the Explore, as shown in Figure 7.14. The documents are displayed in the Web browser, as shown in Figure 7.15.

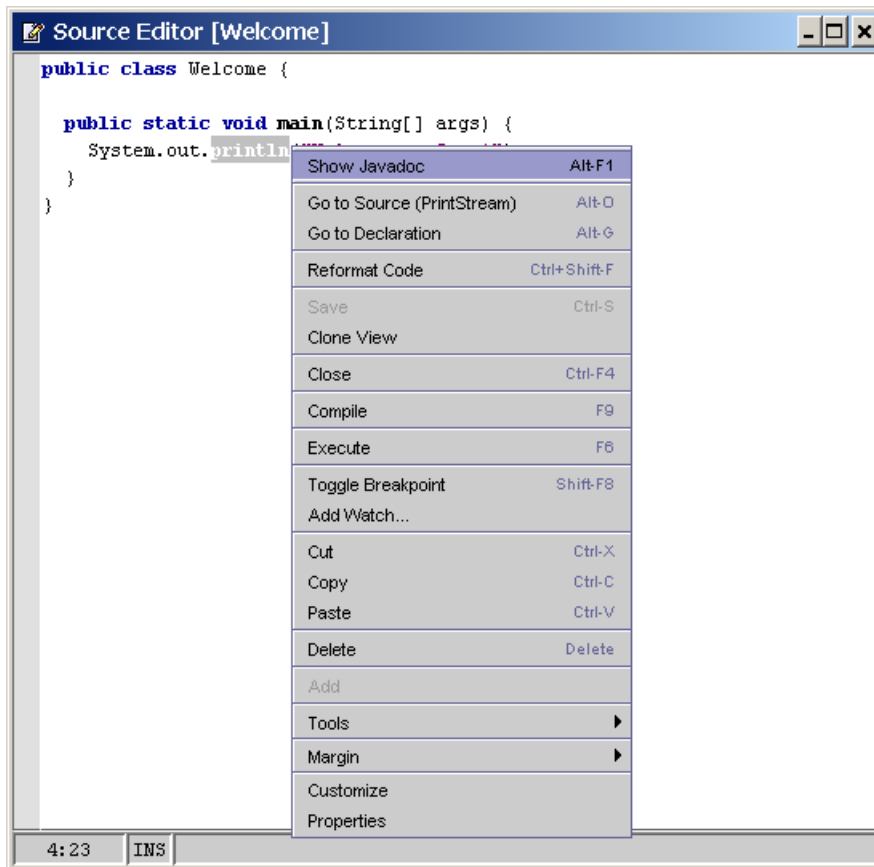


Figure 4.33

You can show Javadoc documents for a class and method by choosing Show Javadoc from the context menu of the class or method.

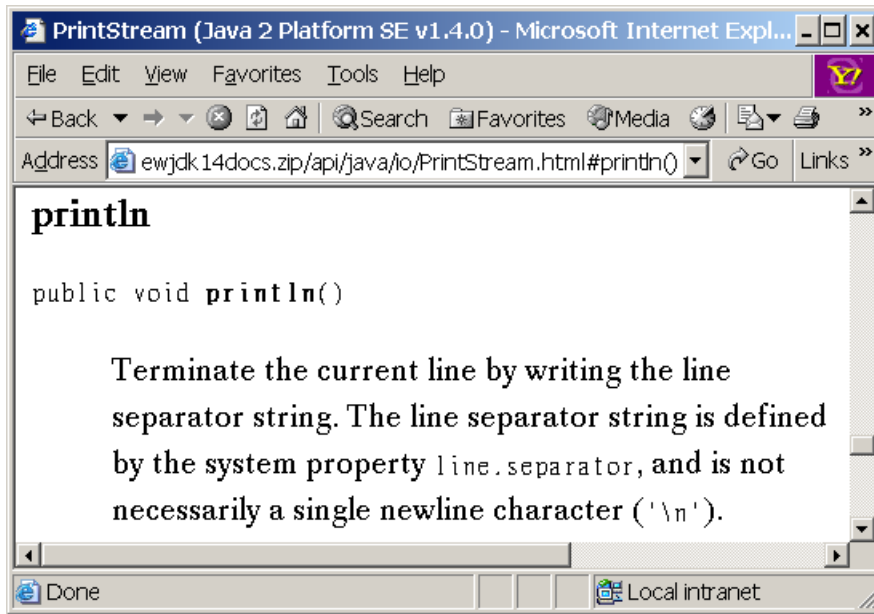


Figure 7.15

The Javadoc documents for a class and method are displayed in the Web browser.